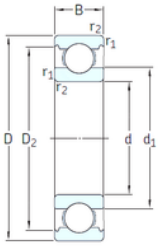




Timken BEARING CORP.of CANADA LTD.



VA201



2Z/VA201



2Z/VA208



2Z/VA228

15 mm x 35 mm x 11 mm SKF 6202/VA201
deep groove ball bearings

Bearing No. 6202/VA201

6202/VA201 Bearing 2D drawings and 3D CAD models

Size	15x35x11 mm
Bore Diameter	15 mm
Outer Diameter	35 mm
Width	11 mm
d	15 mm
D	35 mm
B	11 mm
C	11 mm
d1	21,7 mm
r1 min.	0,6 mm
r2 min.	0,6 mm
D2	30,4 mm
Weight	0,045 Kg
Temperature -	30 to +250 °
Basic static load rating (C0)	3,75 kN
Category	Single Row Ball Bearings
Inventory	0.0
Manufacturer Name	SKF
Minimum Buy Quantity	N/A
Weight / Kilogram	0.049
EAN	7316577094278
Product Group	B00308
Enclosure	Open
Precision Class	ABEC 1 ISO P0
Maximum Capacity / Filling Slot	No



Timken BEARING CORP.of CANADA LTD.

Rolling Element	Ball Bearing
Snap Ring	No
Internal Special Features	Polyalkylene Glycol/Graphite Mixture Filled
Cage Material	Steel
Internal Clearance	C0-Medium
Inch - Metric	Metric
Long Description	15MM Bore; 35MM Outside Diameter; 11MM Outer Race Width; Open; Ball Bearing; ABEC 1 ISO P0; No Filling Slot; No Snap Ring; Polyalkylene Glycol/Graphite Mixture Filled Internal Special Features; C0-M
Other Features	Deep Groove Extreme Temperature Variant
Category	Single Row Ball Bearing
UNSPSC	31171504
Harmonized Tariff Code	8482.10.50.68
Noun	Bearing
Keyword String	Ball
Manufacturer URL	http://www.skf.com
Manufacturer Item Number	6202/VA201
Weight / LBS	0.099
Bore	0.591 Inch 15 Millimeter
Outer Race Width	0.433 Inch 11 Millimeter
Outside Diameter	1.378 Inch 35 Millimeter
Inner Race Width	0 Inch 0 Millimeter
bore diameter:	15 mm
static load capacity:	3.75 kN
outside diameter:	35 mm
precision rating:	Not Rated
overall width:	11 mm



Timken BEARING CORP.of CANADA LTD.

finish/coating:	Uncoated
bore type:	Round
cage material:	Steel
closure type:	Open
outer ring width:	11 mm
row type & fill slot:	Single Row Non-Fill Slot
fillet radius:	0.6 mm
snap ring included:	Without Snap Ring
maximum rpm:	360 RPM
internal clearance:	C0
series:	62
operating temperature range:	-20 to +480 ° F
resistance features:	Corrosion Resistant, Extreme Temperature
d_1	21.7 mm
D_2	30.35 mm
$r_{1,2}$ min.	0.6 mm
d_a min.	19.2 mm
D_a max.	30.8 mm
r_a max.	0.6 mm
Basic dynamic load rating C	8.06 kN
Basic static load rating C_0	3.75 kN
Limiting speed	360 r/min
Limiting temperature T max.	250 ° C
Mass bearing	0.045 kg